

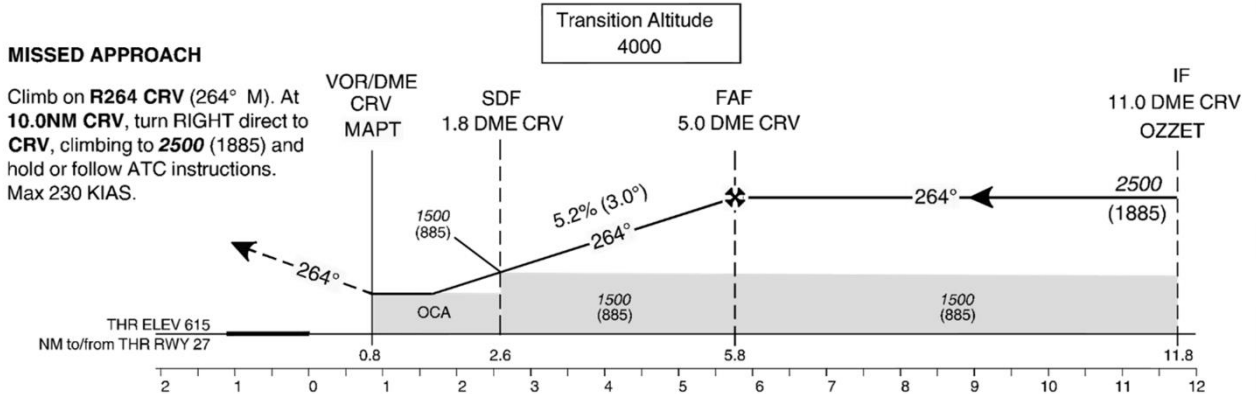
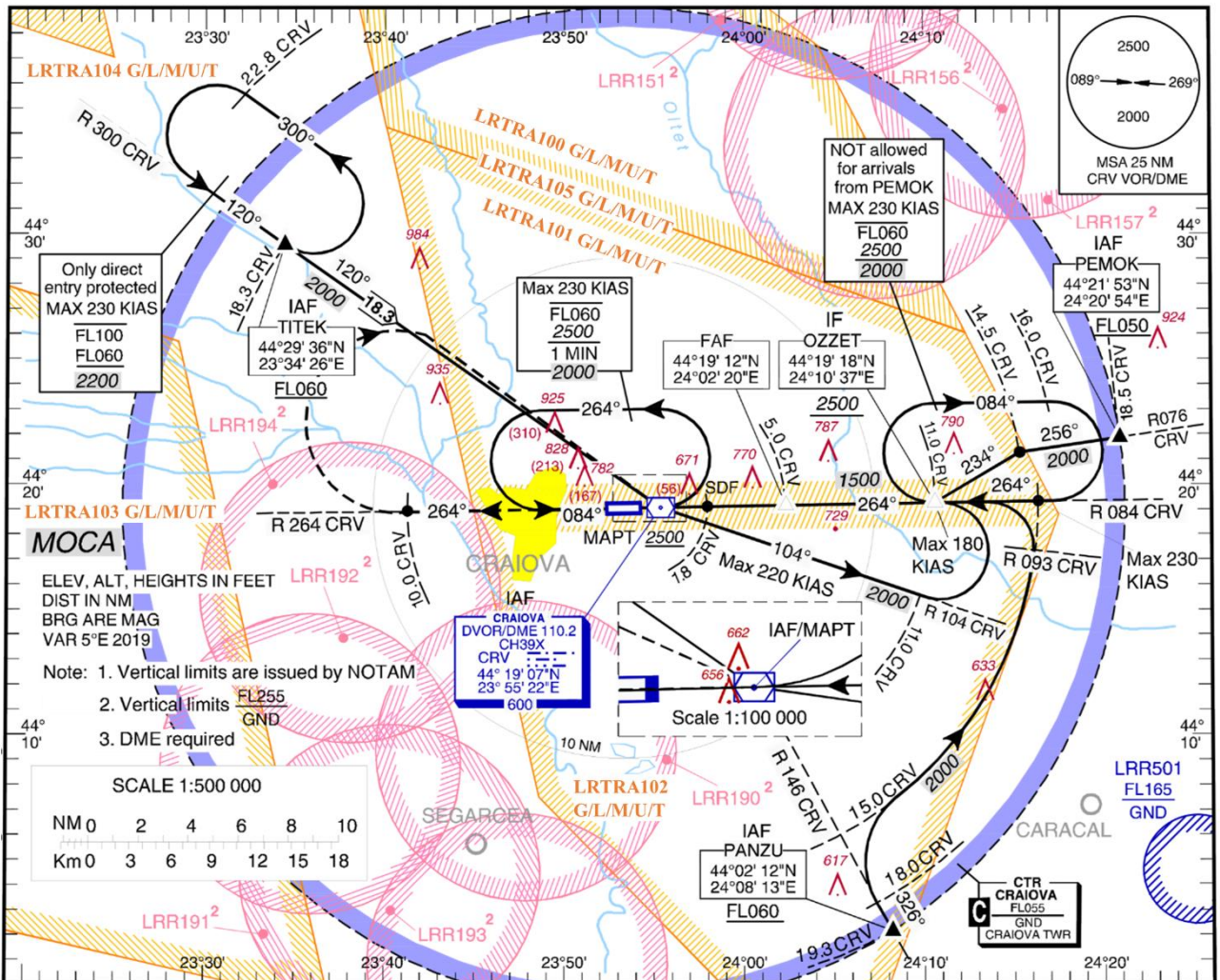
**LRCV/ CRA**  
**INSTRUMENT APPROACH CHART - ICAO**

**CRAIOVA, ROMANIA**  
**VOR RWY 26 CAT C,D**

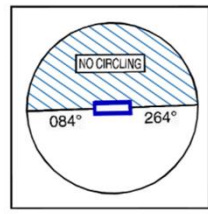
AERODROME ELEV. **628 ft**  
HEIGHTS RELATED TO THR RWY 26 - ELEV. 615 ft

VOR CRV **110.2**

GRANAT Tower **124.575**  
GRANAT Tower ALTN **122.100**



OCA(H)	C	D
Straight-in Approach	930 (315)	
w/o SDF	1500 (885)	
Circling*	1320	1320



GS	KT	70	90	100	120	140	160
FAF-MAPT 5.0 NM	MIN:SEC	4:17	3:20	3:00	2:30	2:09	1:52
Rate of descent (5.24%)	FT/MIN	371	478	531	637	743	849

Timing not authorized for defining the MAPt.

Dist to CRV DME	NM	1	2	3	4
Altitudes (Height)	FT	1240 (625)	1560 (945)	1870 (1255)	2190 (1575)

For data tabulation see verso

**LRCV/ CRA**

**CRAIOVA, ROMANIA  
VOR RWY 08 CAT C,D**

**AERONAUTICAL DATA TABULATION**

<b>VOR Approach to RWY 26 from TITEK, PEMOK, PANZU, CRV</b>	
<b>Fix/Point</b>	<b>Coordinates</b>
<b>TITEK (IAF) – BRG 300.05° / 18.30NM CRV</b>	44°29'35.8"N 023°34'25.9"E
<b>PEMOK (IAF) – BRG 076.27° / 18.54NM CRV</b>	44°21'52.9"N 024°20'54.5"E
<b>PANZU (IAF) – BRG 146.26° / 19.28NM CRV</b>	44°02'12.0"N 024°08'13.0"E
<b>CRV DVOR/DME (IAF)</b>	44°19'07.0"N 023°55'21.9"E
<b>BRG 146.00° / 15.00NM CRV</b>	44°05'57.4"N 024°05'22.5"E
<b>BRG 084.00° / 15.00NM CRV</b>	44°19'29.8"N 024°16'15.4"E
<b>BRG 264.00° / 10.00NM CRV</b>	44°18'55.6"N 023°41'26.3"E
<b>BRG 075.98° / 14.50NM CRV</b>	44°21'17.2"N 024°15'20.4"E
<b>OZZET (IF) – BRG 084.00° / 11.00NM CRV</b>	44°19'17.8"N 024°10'36.9"E
<b>FAF – BRG 084.00° / 5.00NM CRV</b>	44°19'12.0"N 024°02'19.7"E
<b>SDF – BRG 084.00° / 1.80NM CRV</b>	44°19'08.8"N 023°57'52.3"E
<b>MAPT (CRV DVOR/DME)</b>	44°19'07.0"N 023°55'21.9"E
<b>THR 26</b>	44°19'06.08"N 023°54'15.11"E

Final approach descent gradient (angle): 5.2% (3.00°)

**RADIO COMMUNICATION FAILURE**

a) If VOR RWY 26 instrument flight procedure was assigned or received by ATC, set transponder 7600, proceed according assigned or designated VOR RWY 26 instrument flight procedure. Descending shall be executed in accordance with vertical restrictions specified on chart.

b) If VOR RWY 26 instrument flight procedure was not assigned or received by ATC, set transponder 7600, proceed according to FPL to OZZET and hold 4 minutes, then continue the VOR RWY 26 approach.